



FR 1200

Outdoor Slave Fingerprint Reader

IP 65 rated Fingerprint Slave Reader for ZK inBio panels and standalone reader controllers



Small Form Factor:

Sealed Enclosure with slim and attractive design are ideal for indoor and outdoor mounting.



Communication:

FR1200 can be connected to RS485 port of any ZK's inBio Panel or Standalone reader controllers.



Easy Operation:

Once user places their finger on FR1200 its fingerprint is matched by either ZK's standalone reader controller (master reader) or ZK's inBio Panel. It also provides Visual indication for acceptance/rejection of the fingerprint of the users.



Waterproof enclosure:

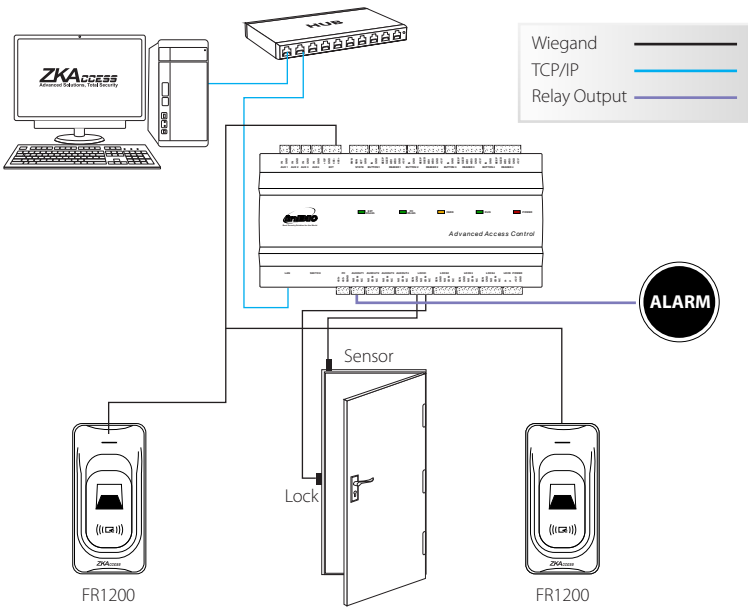
FR1200 is an IP65 rated waterproof reader that can be used for many outdoor applications. The cables and connectors are epoxy sealed at the back of the reader.



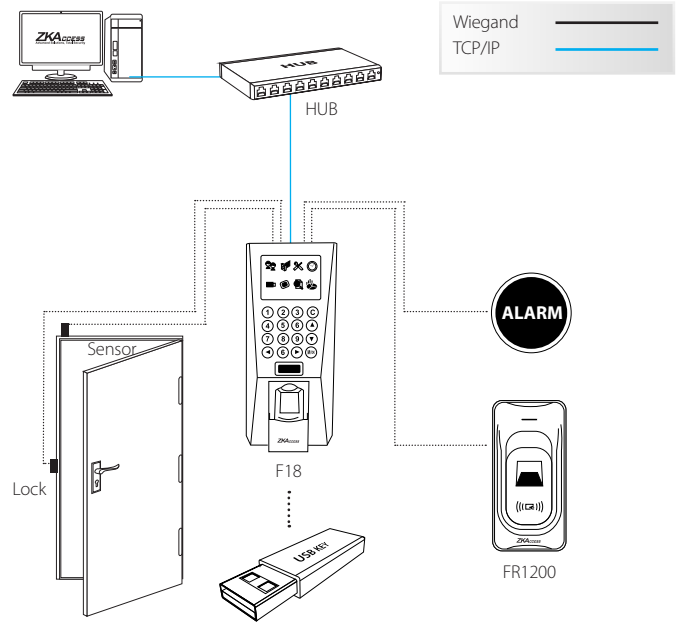
Options:

FR1200 is an IP65 rated waterproof reader that can be used for many outdoor applications.

Installation with inBio



Master/Slave Standalone Installation



Specifications

Communication

RS485

Power

12V DC, 1A

Environment

Operating Temperature: 32° to 113° F (0° to 45° C)

Operating Humidity: 20% to 80%

Optional Function

Mifare Card

Dimensions

Length: 3in (7.62cm)

Width: 1.6in (4cm)

Depth: 1.1in (2.8cm)

Weight: 0.27lbs (0.12kg)

Waterproof Enclosure

IP65 Rated

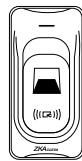
Part Numbers

FR1200

FR1200-ID with ID card reader

FR1200-M with Mifare card reader

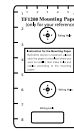
What's in the Box



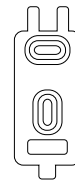
FR1200



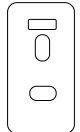
Installation Guide



Installation Template



Back Plate



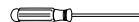
Rubber Gasket



ID Card



Screws



Screwdriver



Design and Specifications subject to change without notice

ZKAccess

201 Circle Drive North, Suite 116

Piscataway, NJ 08854, USA

Tel: +1 732-412-6007

Fax +1 732-412-6008

sales@zkaccess.com

zkaccess.com

ZKAccess-division of ZKTeco